

Find Your
Path
To
Educational
Success

Pathways to Success

Sept-Dec 2009

Featured Participant of the Quarter: Tara Schaffer

Central Kansas
Educational
Opportunity Center



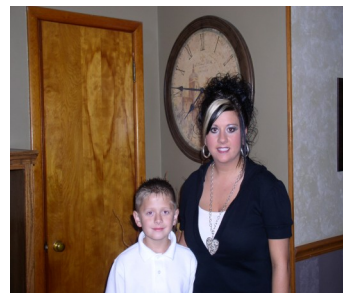
Inside this issue:

Career Highlights	2
Wind Energy	2
Pharmacy Technician – NEW TO BCCC	2
Now Available	2
Target area News	3
Registration Info	3
About CKEOC	4

Tara Schaffer is a single mother looking to find something that she loves to do and she found the help to do just that here at the Central Kansas Educational Opportunity Center.

Tara graduated from Great Bend High School in 2001 and continued her education at Barton Community College where she obtained her CNA certification. Since 2002 she has worked at the Great Bend Surgery & Diagnostic Center (Great Bend Regional Hospital) and felt that she needed to continue her education to make a bet-

ter life for her son, Brannan (age 7) and herself.



She entered the CKEOC office in June of 2008 after talking to Mary Dino (CKEOC Advisor) about her options. Tara began attending Sydney's Hairdressing College in Hutchinson, KS in February of 2009 after going on a campus visit. She will be

graduating in December of this year.

Tara shares the passion for cosmetology with her two sisters, who are also in the field. She also enjoys working with people and this will allow her to utilize her strengths.

Congratulations Tara! We would like to honor you by giving you a gift for your hard work and efforts put forth to obtain your educational goals



CKEOC Office Locations

Great Bend

1025 Main
Great Bend, KS
620-793-8164

Toll Free 877-684-8164

Junction City

1012 A West Sixth
Junction City, KS
785-238-5200

PROJECT DIRECTOR

Susie Burt

COORDINATOR/ACADEMIC ADVISOR

Candace Godfrey, Junction City

ACADEMIC ADVISORS

Mary Dino, Great Bend
Kristin Doze, Great Bend

SECRETARY/DATA SPECIALISTS

Currently Vacant, Junction City
Hilary Suppes, Great Bend

Wind Energy

Wind Energy is the fastest growing energy technology and Kansas ranks 3rd in the nation for potential energy production. Currently in Kansas there are 8 existing projects and 51 proposed projects. This is an industry that is booming and Kansas currently has one school that offers an Associates of Applied Science degree in Wind Energy Technology; Cloud County Community College. For more information on this career contact your Academic Advisor Today!

-www.cloud.edu (2009)



Now Available

KANSASWORKS now offers TapDance® assesment tool to employers and job seekers. This program was specifically developed to assist with training and development of individuals in transition and re-entry into the work place. TapDance® contains Microsoft Office tests and a wide range of keyboard skills including: Typing, 10-Key, spelling and grammar, business math, filing, data entry and more.

Pharmacy Technician

If you are looking for a job that would be good as a full time or part time job Pharmacy Technician is the way to go. Pharmacy Technicians assist the Pharmacists in preparing prescriptions, answering questions about medications, and turning in information to insurance companies.

As a Pharmacy Technician you will work in a clean, well ventilated, lighted and organized environment. Most spend much of their day on their feet and may have to lift heavy boxes. "About 7 out of 10 jobs are in retail pharmacies, grocery stores, department stores, or mass retailers." In these settings many technicians work evenings, weekends, and holidays, but like most jobs the longer

you work there, the more opportunity you might have with determining your schedule.

Pharmacy Technician educational programs require classroom and laboratory work where one will learn medical and pharmacy terminology, pharmacy law and ethics, pharmaceutical techniques, record-keeping and calculations. Many of the programs include an internship so you may obtain hands on experience. "As a technician you will be required to learn medication names, actions, and doses." A pharmacy technician must get recertified every 2 years to keep up with the ever changing pharmaceutical advancements.

Pay rate fluctuates depending on where you get a job. Hospitals and grocery stores tend to pay more, at

least when one is starting out. In May of 2004 the median hourly wage was \$ 11.37.

This field is expected to grow in the upcoming years due to the amount of people needing prescription drugs and more people living in nursing and assisted living homes.

For more information on this career contact your Academic Advisor today!

-*Occupational Outlook Handbook (2006-2007)*

**New to Barton
Community
College**



Have you Registered?

All U.S. male **citizens** must register for selective service between the ages of 18 and 25 years. If you have not registered by your 26th birthday you will be ineligible for Government assistance and aid. If you are a male **non-citizen** who took up residence in the U.S. before your 26th birthday you are also required to register. If you can prove that you didn't reside in the U.S. before your 26th birthday this does not apply to you.

**North Central
Kansas Technical
College is opening a
new campus in Hays!**

Salina Area

Are you in Salina and looking for affordable, safe transportation? Well Salina now has CityGo, a new fixed-route bus system. CityGo serves more than 65 percent of the city and costs only \$1 per trip, \$2 for a one day pass, \$5 for a 6-trip pass or \$30 for a monthly pass. Children 10 and under ride free, but **MUST** be accompanied by someone 16 years of age or older. Personal Care attendants ride free and all buses are wheelchair accessible. Hours are Monday-Friday 6a.m.–9p.m. and Saturdays 9a.m.–5p.m. There is no bus service on Sundays.

Junction City Area

Just some new information:

- ◆ Barton-Fort Riley is starting a GED program geared at military personnel and families.
- ◆ MATC is starting a dental hygiene program in March 2010, if interested, pre-reqs need to be completed before you apply.

Reminders



2009-2010 ACT Testing Dates: Mark your calendar for the following dates: November 11, December 2, December 9, January 5, 6, 7, 12, 13, 14.

Please keep in mind regular registration dates require the regular fee. Late registration will require a late fee. You can register online at www.actstudent.org.

Financial Aid Submission:

Spring semester is just around the corner. Make sure your financial aid is in order **BEFORE** classes begin. Contact our office for assistance in completing your FAFSA.

Services We Offer:

Whether you are a current participant enrolled in classes, or a past participant, you may or may not be aware of all the services we offer. **We can also assist anyone needing to obtain a GED. If you know anyone needing a GED or needing to enter a High School Diploma program please contact our office and we can assist them.**

Our free services include:

- ◆ Scholarship assistance.
- ◆ Assistance with FAFSA completion.
- ◆ Career exploration and advising.
- ◆ Information about vocational/technical schools, colleges, and universities.
- ◆ Assistance with applying for admission.
- ◆ Transportation to campus visits.
- ◆ Career networking with professionals currently working in your field of interest.
- ◆ Reference library including career, educational, financial, and self-help topics that include books, videos, and audio tapes available for check-out.
- ◆ Laptop program for participants enrolled full-time who do not have access to a home computer (subject to availability).
- ◆ TI-83 Calculator program for participants enrolled full-time. (subject to availability)





**1025 Main
Great Bend, KS 67530**

Non-Profit Org.

U.S. Postage

PAID

Permit No. 11

Great Bend, KS



<http://www.bartonccc.edu/eoc/>

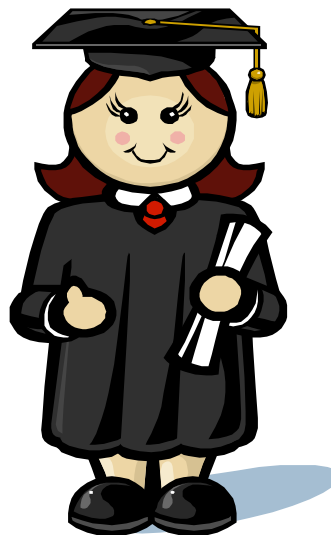


About CKEOC

The Educational Opportunity Center is 100% funded by the U.S. Department of Education and is one of the TRiO programs. TRiO began with the Economic Opportunity Act of 1964, in response to the administration's War on Poverty.

TRiO
EDUCATIONAL
OPPORTUNITY CENTERS

TRiO programs include eight outreach and support programs targeted to help disadvantaged students progress from middle school to post-baccalaureate programs.



32 Counties Served by CKEOC

Barton, Clay, Cloud, Dickinson, Ellis, Ellsworth, Geary, Graham, Jewell, Lincoln, Marshall, Mitchell, Morris, Ness, Norton, Osborne, Ottawa, Pawnee, Phillips, Pottawatomie, Republic, Rice, Riley, Rooks, Rush, Russell, Saline, Smith, Stafford, Trego, Wabaunsee, and Washington.