

Barton Financial Aid Office

Processing

FAFSA's Recvd

2005-06	2,511
2006-07	2,306

Federal Application Website

www.fafsa.ed.gov

Loan Default Rates

Barton's 2007-08 cohort default rate 4.80%

2 yr Public Average 7.90%

National Average 4.60%

Funds Management

2006-07

	\$ Disbursed	Recipients
Federal Pell Grants	\$ 1,590,371	748
Federal SEOG Grants	\$ 25,196	84
Federal ACG Grants	\$ 44,500	54
Federal CCAMPIS Grants	\$ 9,247	22
Federal SSS Grants	\$ 45,500	63
Federal Work Study	\$ 59,049	72
Federal Stafford Loans	\$ 2,356,870	885
Federal Parent Loans	\$ 87,201	17
State Scholarships	\$ 19,000	14
Institutional Aid	\$ 1,049,940	1,680
Community Scholarships	\$ 107,707	188
TOTALS	\$ 5,394,361	3,827

In 2006-07 the Financial Aid Office started administering all athletic aid. Prior to that, athletic aid was disbursed by the Business Office and not reflected in this data.

Boost Scholarships 06-07

(High School Students)

Barton County	53
Service Area	74
Total	127

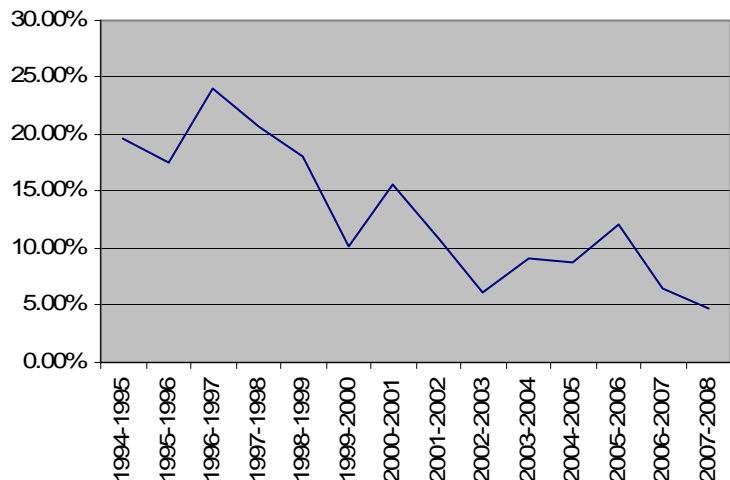
Scholarship Information

Aid by Source	2004-2005	2005-2006	2006-07
Federal	\$ 3,470,281	\$ 3,287,334	\$ 4,218,034
State	\$ 44,750	\$ 47,000	\$ 19,000
Institutional	\$ 384,234	\$ 434,518	\$ 1,049,620
Community	\$ 141,858	\$ 160,576	\$ 107,707
TOTAL	\$ 4,051,415	\$ 3,929,428	\$ 5,394,361

Aid by Populations (06-07)

	Residents of Barton County	Ft Riley Students	Other Counties/States
Federal Aid	\$ 1,234,962	\$ 253,888	\$ 2,729,184
Total Aid	\$ 1,656,370	\$ 263,154	\$ 3,474,837

Cohort Default Rates



Total Financial Aid Dollars

