

# Instructions for Prairie Village Wireless Network

## Instructions for Windows7

When logging in on the housing wireless internet (COUGAR), you will see a star on the network icon.



Click on the star, a window with available network connections will open. Housing wireless network is COUGAR.

To refresh the list of available networks, click on the button highlighted in the screenshot below.



Next click on the COUGAR network and click on the Connect button.



This is where they will enter the WEP key BC255 (BC is capitalized)

When the connection is successful, the wireless icon from your taskbar changes as shown below.



Follow this, if there is still issues connecting to the network perform the following:

From a command line, enter ipconfig/release

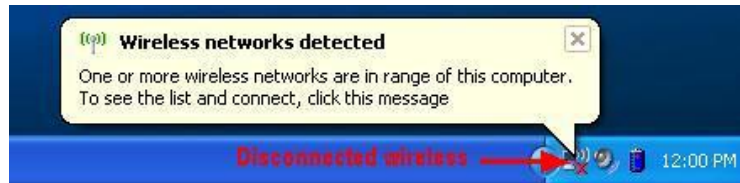
Then enter ipconfig /renew

Contact Person: Mark Rogers 620.792.9855

# Instructions for Prairie Village Wireless Network

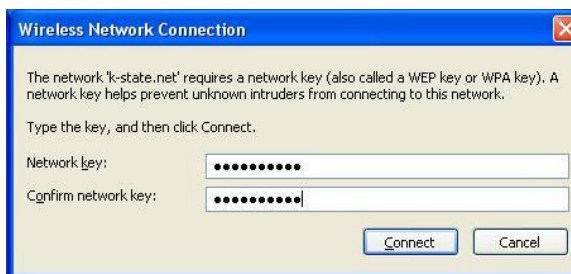
## Instructions for XP & Vista

Click the wireless network icon on the desktop to open connection window. A red x next to the icon indicates that there is no connection to the detected wireless network.



The Cougar wireless network ( SSID: Cougar ) will be listed as available in the wireless network connection window. Select it and click the **Connect** button.

Enter the WEP key ("BC255") on both lines, then click Connect. (**BC is capitalized**)



Note the connected icon in the system tray does not have the red x



Follow this, if there is still issues connecting to the network perform the following:

From a command line, enter `ipconfig /release`  
Then enter `ipconfig /renew`

**Contact Person: Mark Rogers 620.792.9855**