



# Comings & Goings

for the months of May/June 2011

Activities and Events for Silver Cougar Club Members!

## YOU ARE INVITED

Please join us for the annual

### SILVER COUGAR CLUB PICNIC

WEDNESDAY, JUNE 8, 2011

6:00 – 8:00 P.M.

Barton Community College  
Student Union

Reservations will be accepted for the first 225 people to RSVP  
and must be made by May 31, 2011.

Contact Coleen Cape at (620) 786-1136 or [capec@bartonccc.edu](mailto:capec@bartonccc.edu).

**\*\*SCC MEMBERS – BRING A GUEST\*\***

Gifts will be given to guests who become new members  
at the picnic!

Activities Include:

6:00 p.m. Dinner & Dessert

7:00 p.m. Program



For more information, contact the Foundation Office at (620) 786-1136 or (620) 792-9306.

Visit our website: [www.bartonscc.org](http://www.bartonscc.org)

## THE PAINTED WORD: MEDITATIONS ON ART AND THE BIBLE

Dave Barnes, Director of the Shafer Gallery at Barton Community College, will host a series of talks examining art historical masterpieces inspired by stories from the Christian Bible. The five (5) week series of meditations will examine the theological, historical and personal meanings behind each artist's work. Topics will include; Rembrandt's Pathos and the Prodigal Son, the Search for the True Cross, Scapegoats and Themes of Redemption and The Cross in Human Suffering. The series will invite the participant to explore the meanings and possible applications of these great works of art to their lives. Don't think boring art history lectures, think Sister Wendy with a beard!

Enrollment is limited to 60 with a minimum of 12 required.

Contact Coleen Cape at (620) 786-1136 or [capec@bartonccc.edu](mailto:capec@bartonccc.edu) to enroll.

**Wednesdays, May 4 – June 1, 2011**

**2:00 – 3:00 p.m.**

**Shafer Art Gallery**

**\$30.00 for SCC members /\$45.00 for non-members**



## VOLUNTEER OPPORTUNITIES

There are currently two opportunities for the Silver Cougars to volunteer at the Learning Resource Center. In both instances the members will be able to work at their convenience on the days and hours that best suit their schedule.

The first would be assistance with labeling archived pictures. The library has boxes of archived pictures dating back to the beginning of the college in 1969. Unfortunately, many of them were not labeled and therefore, Mary does not know who are in those pictures. Not being a native of Great Bend herself, she is asking for assistance from those of you that have lived in this area a long time and would most likely be able to identify at least some of the persons in these photographs. Mary will be available on April 12, 13, 14, 19, 21, 25 and 28, and will have work areas for anyone who could come out and help with this process. If you are interested and would like to set up a time to volunteer, contact Mary Hester at 620-792-9364 or [hesterm@bartonccc.edu](mailto:hesterm@bartonccc.edu).

The second project is assisting members of the community with the microfiche scanning of documents. There are currently only three digitized microfiche scanners in the state of Kansas and we have one in the Learning Resource Center on campus. This scanner makes it possible to preserve valuable documents that are currently in danger of being lost due to aging and the normal disintegration cause by years of storage. There would be some training on how to use the machine, but Mary assures it is very simple to use and the process is not at all difficult. Once trained you would be able to work in the library on your schedule anytime during library hours. The library is open 7:30 a.m. – 10:30 p.m. Monday through Thursday, 7:30 a.m. – 4:30 p.m. on Fridays, and 2:00 – 10:30 p.m. on Sundays. If you are interested and would like to set up a time to volunteer, contact Mary Hester at 620-792-9364 or [hesterm@bartonccc.edu](mailto:hesterm@bartonccc.edu).



**Memorial Day**  
**May 30, 2011**

**Flag Day**  
**June 14, 2011**



**WETLANDS EDUCATION CENTER / CHEYENNE BOTTOMS TOUR**

Curtis Wolf, former Barton biology instructor, is currently the director of the Wetlands Center and will be our guide for a tour of both the Wetlands Center and Cheyenne Bottoms. The first week of May each year is the peak season for the migration of birds and the bottoms are alive with all species of water fowl.



We will board the bus at 4:30 p.m. on Tuesday May 3, 2011 (south Kirkman parking lot on campus) and proceed to the Wetlands Center. Curtis will provide a tour of the center and a short program in the auditorium. We will then depart for a tour of the bottoms with Curtis as our guide and teacher. This tour has been a big hit for the past two years and I can promise you a delightful spring evening in good company. Even if you have gone before, each trip brings new surprises.

A box lunch will be provided for \$7.50 per person. **Reservations and payment must be to the Foundation office by Tuesday, April 26, 2011.** Contact Coleen Cape at (620) 786-1136 or capec@bartonccc.edu to reserve your spot. This trip is limited to 24 with a minimum of 14 required.

**HISTORIC FORT RILEY**



Come and spend Tuesday, May 10<sup>th</sup> touring historic Fort Riley. Linda McCaffery will be joining us as our tour guide and will be able to share so much of the significance and impact of the Fort on the history of this area and our country. We will leave campus and arrive at Grandview Plaza to pick up a guide from the Fort who will be able to share the impact and involvement of Barton Community College on the daily lives of our soldiers; then we're off to the golf course where you will be on your own for lunch.

After lunch we will tour various museums: 1<sup>st</sup> Infantry Division, Cavalry Museum, Fort Riley Museum, the Fort Riley Cemetery, and an overall visit to the post. It should be a very informative and interesting day for any history buff or American patriot.

The cost will be \$20.00 per person. **Reservations and payment must be received by May 3, 2011.** This trip is limited to 22 guests with a minimum of 14 required, and you must present a photo ID to be admitted to the Fort. **If you do not have a photo ID you will not be allowed to enter – no exceptions allowed.** We will begin boarding the bus at 7:30 a.m. (south Kirkman parking lot on campus) and plan to leave campus by 8:00 a.m. The tour should end between 4:00 p.m. and 5:00 p.m. and we will return home. To make reservations call Coleen Cape at (620) 786-1136 or capec@bartonccc.edu.

**MARCH 16, 2011 ADVISORY BOARD MEETING MINUTES**

The Silver Cougar Club Advisory Board met in room U-219 of the Student Union for its annual March meeting with 23 members attending. They were welcomed by Coleen Cape, Coordinator of the Silver Cougar Club and Darnell Holopirek, Executive Director of Institutional Advancement. All members introduced themselves and Darnell and Coleen expressed their appreciation to everyone in attendance for their willingness to serve on the board.

- David Barnes, Director of the Shafer Gallery, visited with the group about future plans and upcoming events. Once again, he asked for volunteers to assist with several aspects within the Gallery. This summer the Gallery will not have student employment and if members would be willing to help out as greeters at the reception desk, it would allow David to do gallery work. One or two hours at a time would be greatly appreciated and the day of the week would be up to the volunteer.
- Coleen reviewed the current class schedule and ideas for trips and events. Linda McCaffery's history class will run from March 31<sup>st</sup> – April 28<sup>th</sup>. The club will be traveling to Topeka on April 14<sup>th</sup> for the Tulip Festival. The annual picnic will be June 8<sup>th</sup> and plans are in progress for a historical tour of Fort Riley and another Cheyenne Bottoms Wetlands tour in May.
- Possible future activities include a trip to the expanded Underground Salt Mines in Hutchinson, and the development of a monthly open forum, with various members of the faculty and staff highlighting their departments and programs.
- Coleen reported on the SCC Scholarship. The balance on March 16, 2011 was \$1,328.50. Scholarships for the 2010-2011 year have been paid, so this balance will make it possible for two \$500 scholarships to be given for the 2011-2012 academic year.
- Darnell Holopirek reported on several Foundation sponsored events. The Spelling Bee held on March 12<sup>th</sup> was a great success; although not sponsored by the Foundation, the organization and support of the Foundation make the event possible. The Clay Shoot will be on Sunday, April 17<sup>th</sup> at Lasada's in Russell and on April 19<sup>th</sup> the Foundation will sponsor "Dancing with the Barton Stars" a fund raiser for the Performing Arts Department.
- In addition to the Gallery, two volunteer opportunities for the library were discussed.
- The board voted to increase the meetings to three times a year. The next meeting will be in July and the third meeting will be held in November.



SCC Members present: Keith Beckwith, Iva Behrens, Mary Bender, Billie Bonomo, Jean Cavanaugh, Ronnie Drees, Cornelius & Gerri Enslinger, Al & Delores Grose, Sharon King, Joe Larkin, Ruth Lowry, Nancy Rogers, Marie Schepmann, John & Reta Schreiber, Shirley Smith, Mae Suppes, and Patricia Teel.

**SHAFER GALLERY EXHIBITS**

**Barton Community College Student Juried Exhibition**

May 1 – May 11, 2011

Reception: May 1, 2011 1:00 – 3:00 p.m.

**Nailcuts by Birger Sandzen**

Exhibition of Sandzen prints from the Sandzen Gallery in Lindsborg

May 16 – July 22, 2011

**SHAFER GALLERY CLOSINGS**

Memorial Day

May 30, 2011

**VOCAL & INSTRUMENTAL MUSIC ENDOWMENT CONCERT**

May 2, 2011

7:30 p.m. Fine Arts Auditorium

\$5.00 Admission



**INSTRUMENTAL CONCERT**

May 5, 2011

7:30 p.m. Fine Arts Auditorium

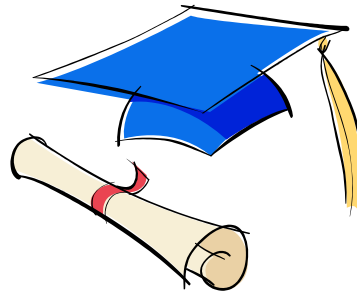
Free Admission

**COMMENCEMENT CEREMONY**

May 12, 2011

Barton Community College Gymnasium

7:00 p.m.




**CAMPUS CLOSINGS**

Memorial Day

May 30, 2011

**COLLEGE SUMMER HOURS**     *Effective May 16 through August 5, 2011*

- **COLLEGE OFFICES:** (except Kirkman Student Services office)  
Monday - Thursday . . . . . 7:30 a.m. - 5:00 p.m.
- **KIRKMAN STUDENT SERVICES OFFICE:**  
Monday - Thursday . . . . . 7:30 a.m. - 5:30 p.m.
- **CAMPUS CLOSED ON FRIDAYS**



# Celebrate

HAPPY BIRTHDAY to our Silver Cougar Club Members who will celebrate another year in May and June.

## MAY

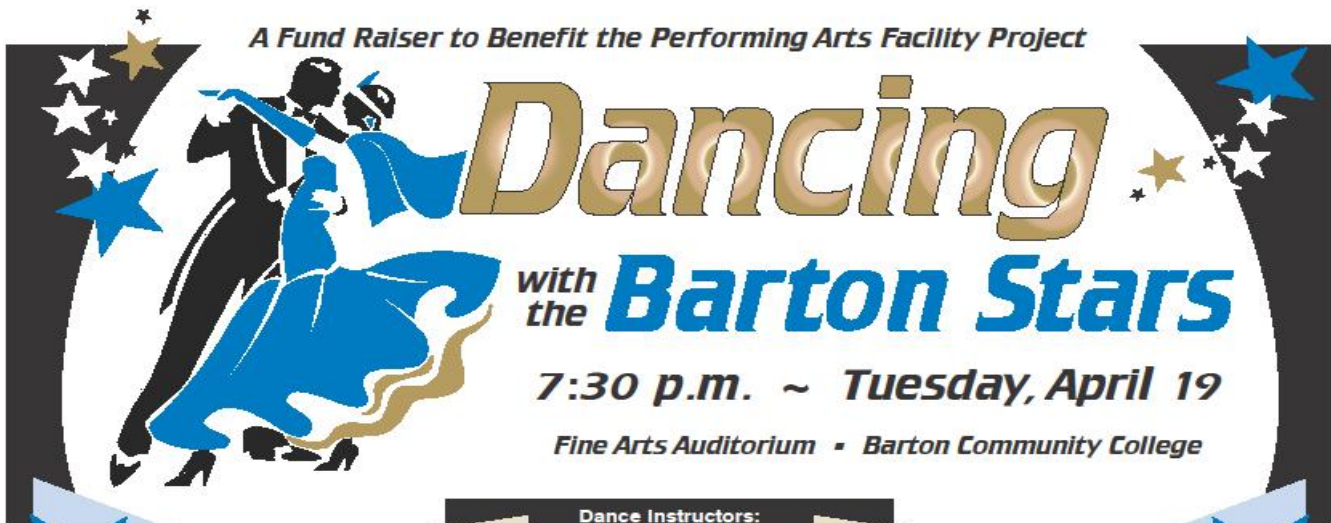
Richard	Ahlvers
Charlotte	Biays
Phyllis	Bosley
Alberta M	Brack
Gladys	Brack
Ann	Brown
Larry	Dannebohm
Jane	Delong
Marian	DeWerff
Joan	Dreher
James	Farmer
Alicia	Fricke
Jeanne	Gotsche
Louise	Gunn
Juanita	Hanhardt
Donna	Hanken
E. W.	Hapes
Mel	Holopirek
Darnell	Holopirek
Violet	Kasselman
Judy	Lange
Lois	Marshall
Darlene	Nulton
Sue	Parmer
Margaret	Pfortmiller
Evelyn	Reiser
Dale	Schadel
Gilbert	Schartz
Marie	Schepmann
Kathy	Simmons
Randy	Smith
Mary Lou	Warren
Gerri	West
Barbara	Wolford
Dianna	Zimmerman

## JUNE

Kathryn	Ahlvers
Jenny	Allford
Gary	Anschutz
Mary	Bayer
Dorothy	Biggs
Steven	Black
Phyllis	Blythe
Lou	Button
Donna	Case
Jean	Cavanaugh
Janet	Chism
Harlan	Davenport
Marguerite	Davidson
Eunice	Dreher
Linda	Haines
Norma	Hammeke
Jean	Hanks
Jimmie	Harbour
David	Hays
Denis	Hertel
James	Jay
Glynnese	Jones
Sharon	King
Mary	King
June	Koelsch
Don	Komarek
Gerald	Komarek
L. Diane	Kreft
Sally	Lloyd
Merle	Loewen
Jack	Messick
Rose	Meyeres
Phyllis	Miller
Jackie	Myers
Sandy	Niedens
Barbara	Nuss
Reba	Raleigh
Eleanor	Ramsey
Nancy	Rogers
Lorene	Schartz
Edis	Schauvliege
Bernard	Schneweis
Karen	Shaner
Ronald	Tammen
Judith	Turner
Jean	Wagner
Kay	Wilbur



A Fund Raiser to Benefit the Performing Arts Facility Project



# Dancing with the Barton Stars

7:30 p.m. ~ Tuesday, April 19

Fine Arts Auditorium • Barton Community College

Dance Instructors:

**Barb's School of Dance**  
Lindsey Fell  
Natasha Homeler  
Haley Johnson

**Dance by Design**  
Lee Ann Bashor

**Just Dance**  
Kelley Scott

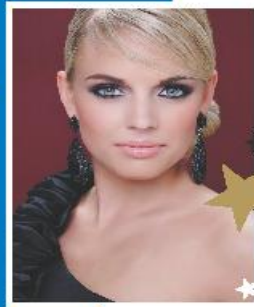
Dance Couples:

 Lynda Jamison	 Mark Mingenback	 Jan Westfall	 Dr. Carl Heilman	 Rachel Mawhirter	 Steve Webster	 Melanie Calcara	 Dan Heath	 Allene Owen	 Jo Harrington
---	---	--	--	--	---	--	---	---	---

**Tickets: \$5.00**

- tickets available: by calling 620-792-9391, at several businesses, or can be purchased at the door

**Ballet Performance by Miss Kansas, Lauren Werhan**



Her special appearance is sponsored by Adams, Brown, Beran & Ball, Chtd.



**Emcees for the Evening**



**Scott Donovan**  
Eagle Radio



**Jemelle Holopirek**  
KAKE TV's "Good Morning Kansas"

Barton Community College  
**FOUNDATION**  
245 NE 30 RD • Great Bend, KS 67530

**DECADENT PEANUT BUTTER PIE**

1 prepared chocolate cookie pie crust  
 8 oz cream cheese (at room temperature)  
 4 ½ C (12 oz container) of non-dairy whipped topping, divided  
 Drizzle:

1 C creamy peanut butter  
 ½ C sugar  
 1-11.75 oz jar Smucker’s Hot Fudge Ice Cream topping, divided  
 2 T Smucker’s Hot Fudge and 2 Tbs Peanut Butter



In a medium bowl, beat together peanut butter, cream cheese, and sugar. Gently fold in 3 cups whipped topping. Spoon mixture into the pie shell. Using a spatula, smooth mixture to edges of pie.

Reserving 2 tablespoons of Smucker’s Hot Fudge, place remaining Hot Fudge into microwave safe bowl or glass measuring cup. Microwave for 1 minute. Stir. Spread over pie to cover the peanut butter layer. Refrigerate until serving time. Just before serving, spread remaining whipped topping over hot fudge layer, being careful not to mix the two layers.

Place the 2T Hot Fudge in a small baggie and knead for a few seconds. Cut a tiny hole in the corner of the bag and drizzle over the pie. Do the same with 2T peanut butter going in the opposite direction of the Hot Fudge.

**CHOCOLATE ZUCCHINI BREAD**

1/2 C butter, softened  
 2 eggs  
 1 1/2 C flour  
 1/2 t. salt  
 1/2 t ground cinnamon  
 1/2 C semisweet chocolate chips

1 C sugar  
 1 t vanilla  
 3 T baking cocoa  
 1/2 t baking soda  
 1 C grated unpeeled zucchini



In a large mixing bowl, cream the butter and sugar. Beat in eggs and vanilla. Combine the flour, cocoa, salt, baking soda and cinnamon; gradually add to creamed mixture. Stir in the zucchini and chocolate chips.

Spoon into a greased 8 x 4 x 2 inch loaf pan and bake at 350° for 60-70 minutes. Cool for 10 minutes before removing from pan to a wire rack. Can also use muffin cups and bake for 20-22 minutes.

Yield: 1 loaf

**DAD’S PANCAKES**

3 C flour  
 1t salt  
 1 ½ C blueberries (opt)  
 Dash of cinnamon(opt)

3T baking powder  
 3C milk  
 1C white chocolate chips(opt)

1 stick melted butter  
 2 eggs



**Syrup:**

1C boiling water  
 1C white sugar

1C brown sugar  
 1t vanilla

1 cap of mapeline

Pancakes: Mix all ingredients until batter is smooth; ladle onto a hot buttered pan or griddle. Cook until bubbles start to form; flip over and cook other side until firm.

Syrup: Stir the ingredients into boiling water and continue stirring until almost boiling. Pour over pancakes.

## Flowers

Find and circle all of the flowers that are hidden in the grid.  
The remaining letters spell a secret message - a quotation  
from *Romeo and Juliet*.



P	L	A	V	E	N	D	E	R	A	C	R	O	A	R	A	O	S	A
Y	I	A	I	N	U	T	E	P	E	D	A	N	E	E	E	R	D	R
S	U	L	O	I	D	A	L	G	O	G	T	L	S	W	G	C	L	E
I	C	B	U	Y	A	N	T	R	Y	H	N	K	I	O	N	H	O	B
A	H	A	S	T	E	R	N	O	U	N	C	I	Y	L	A	I	G	R
D	R	E	H	T	A	E	H	R	N	O	O	A	G	F	R	D	I	E
F	Y	E	O	B	D	D	I	H	H	E	L	E	L	N	D	B	R	G
O	S	T	W	L	I	U	E	Y	T	S	M	I	P	R	Y	E	A	A
X	A	A	O	O	M	R	L	L	T	N	S	T	H	O	H	L	M	M
G	N	G	I	E	L	L	D	R	P	I	I	R	E	C	S	L	N	A
L	T	F	A	S	O	F	O	O	A	H	K	C	M	G	I	F	D	R
O	H	U	E	H	E	E	N	N	F	C	I	C	A	W	R	L	A	Y
V	E	C	O	U	M	E	T	U	O	P	A	N	E	Y	I	O	F	L
E	M	H	L	E	D	H	R	T	S	L	A	R	I	S	H	W	F	L
C	U	S	R	S	U	M	S	F	L	E	L	R	N	U	O	E	O	I
I	M	I	L	S	G	E	R	A	N	I	U	M	A	A	M	R	D	S
T	A	A	H	T	A	E	R	B	S	Y	B	A	B	D	T	A	I	S
A	S	I	T	A	M	E	L	C	W	O	R	R	A	Y	I	I	L	S
T	E	L	O	I	V	B	O	U	V	A	R	D	I	A	W	S	O	E
S	L	I	L	Y	S	N	A	P	D	R	A	G	O	N	E	T	E	N



Just  
For  
Fun

ALSTROEMERIA	CORNFLOWER	GOLDEN ROD	PANSY
AMARYLLIS	DAFFODIL	HEATHER	PEONY
ANTHURIUM	DAISY	HOLLYHOCKS	PETUNIA
ASTER	DELPHINIUM	HYACINTH	ROSE
BABY'S BREATH	FORGET-ME-NOT	HYDRANGEA	SNAPDRAGON
BELL FLOWER	FOXGLOVE	IRIS	STATICE
BIRD OF PARADISE	FREESIA	LAVENDER	STOCK
BOUVARDIA	FUCHSIA	LILAC	SUNFLOWER
CALLA	GERANIUM	LILY	TULIP
CARNATION	GERBERA	LISIANTHUS	VIOLET
CHRYSANTHEMUM	GINGER	MARIGOLD	YARROW
CLEMATIS	GLADIOLUS	ORCHID	



Address Service Requested

245 NE 30 RD • Great Bend, KS 67530-9251



Non-profit Org.	_____
U.S. Postage	_____
<b>PAID</b>	_____
Permit No. 11	_____
Great Bend, KS	_____

